

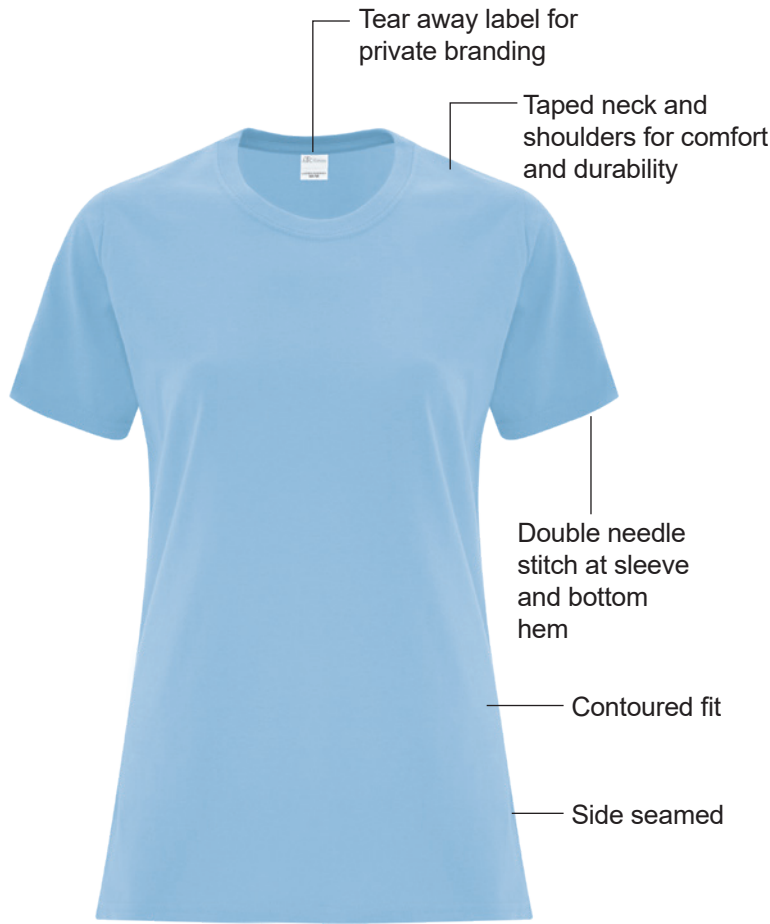
**Everyday Cotton Ladies' Tee**

**ATC1000L**

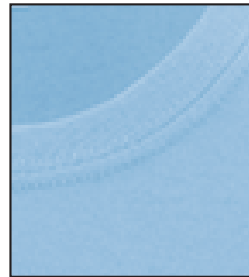
**Product Features:**

- 9.1-oz, 100% cotton
- Compacted yarns to minimize shrinkage
- **OEKO-TEX® STANDARD 100**

**Ladies' sizes: XS-4XL**



1 x 1 rib knit collar



**Available Colours and PMS Colours**

Textile fabric colours are subject to dye lot variation and will not be exact match to print Pantone reference



# ATC1000L - ATC™ Everyday Cotton Ladies' Tee



TEAL  
2224C



LAUREL  
GREEN  
4198C



TRUE  
CELADON  
7464C



KELLY  
340C



LIME  
367C



YELLOW  
113C



GOLD  
137C



ORANGE  
172C



PALE  
BLUSH  
5025C



MAROON  
7644C



RED  
200C



HEATHER  
RED\*\*  
193C



SANGRIA  
205C



CANDY  
PINK  
189C



PURPLE  
7672C



LAVENDER  
2071C



OATMEAL  
HEATHER\*\*\*  
Warm Grey 2C

\*90/10 cotton/polyester \*\*50/50 cotton/polyester \*\*\*98/2 cotton/polyester

## Garment Measurements

Size	XS	S	M	L	XL	2XL	3XL	4XL
<b>Chest - Half Measure</b>	18 1/2"	19 1/2"	20 1/2"	22"	23 1/2"	25"	27"	29"
<b>Chest - Full Measure</b>	37"	39"	41"	44"	47"	50"	54"	58"
<b>Body Length from HPS</b>	26"	26 1/2"	27"	28"	29"	30"	30 1/2"	31"
<b>Sleeves Length - CB</b>	14 1/2"	15"	15 1/2"	16"	16 1/2"	17"	17 1/2"	17 1/2"

Finished measurements in inches. Refer to "How to Measure" guide for detailed information on measurements instructions.